

# TUBS & SURROUNDS

## FIBERGLASS TUB—STANDARD



One-piece design for a clean, simple design; left, right, or center drain.

- 309525 54" x 28" Center White
- 309530 54" x 28" Center Bone
- 309535 54" x 28" LH Bone
- 309540 54" x 28" LH White
- 309545 54" x 28" RH Bone
- 309550 54" x 28" RH White

## FIBERGLASS GARDEN TUB



- 309555 54" x 45" White w/step
- 309560 54" x 45" Bone w/step



- 309565 60" x 42" Bone no step
- 309570 60" x 42" White no step

## SURROUNDS



- 309600 54" x 27" White 1pc
- 309605 54" x 27" Bone 1pc
- 309620 54" x 40" White 1pc
- 309625 54" x 40" Bone 1pc
- 309635 32" x 32" Bone
- 309630 32" x 32" White

## SHOWER PAN FIBERGLASS



- 309710 32" x 32" White

# FAUCETS

## PHOENIX GARDEN TUB



301010 Chrome Adjustable 8" Centers

## PHOENIX TUB/SHOWER DIVERTER

302030 Chrome 8"



## PHOENIX TUB & SHOWER



309145 8"

## PHOENIX THREE VALVE DIVERTER

302500 8"



## TWO VALVE TUB/SHOWER DIVERTER

302505 Chrome 8"



## PHOENIX SHOWER VALVE

302510 4"



## PHOENIX SHOWER VALVE

301005 8"



## PHOENIX SHOWER w/HEAD

302515 8"



## UTOPIA TUB / SHOWER

301020 8"



## EURO SHOWER SET



301015

## SHOWER HEAD



306075 1/2" Premium head

# SHOWER MISC—STEMS

## TUB STOPPER



304015 Push / Pull

## SHOWER DRAIN



304020 Touch Toe

## SHOWER STRAINER



304025 4"

## SHOWER ARM/FLANGE



306070 Phoenix

## TUB SPOUT



304640 w/Lift

## GARDEN TUB SPOUT



304610 Phoenix

## STEM



306010 61-5-0

## STEM



306015 41-5-0

## GARDEN TUB HANDLE



306150 Large pk-2

## STEM



306650 45-5-0 Plastic

## STEM



306615 P-82 Plastic

## TUB RIVETS



306665 Almond 25/ct  
306660 White 25/ct

# BATHROOM FAUCETS—SINKS

## BATHROOM SINK—PLASTIC



301025 17 x 20 White Round  
301030 17 x 20 Bone Round



301040 17 x 20 Bone Rectangle  
301035 17 x 20 White Rectangle

## SINK—CHINA



307000 17" x 20" White  
307005 17" x 20" Bone

## LAVATORY FAUCET



302035 4" Phoenix

## BATHROOM FAUCET



302045 4" w/Pop-up  
303600 4" Brass Underbody

## LAVATORY FAUCET



302040 4" Brush Nickel Phoenix

## CO PLUG



306115 1-1/4" Chrome  
306155 1-1/4" Bone  
306120 1-1/4" White

## PHOENIX HANDLES



306130 Clear faucet handles

## FAUCET CONNECT w/ STRAIGHT VALVE



304055 1/2" fpt x 1/2"  
valve -18"

# KITCHEN FAUCETS—SINKS

## PULLOUT FAUCET



303050 Chrome Phoenix

## KITCHEN SINK w/LEDGE



301050 33" x 19" x 8"D Stainless Steel

301045 33" x 19" x 6"D Stainless Steel

## KITCHEN FAUCET



303040 8" Centers Phoenix



302070 8" w/Spray

## HI-RISE FAUCET



303045 Chrome

## ONE LEVER FAUCET



303035 Phoenix hybrid

## PHOENIX SPOUT



304035 Standard

## HI-ARC SPOUT



306165 Phoenix

## HAND SPRAY



306197

## METAL BASKET & STRAINER



304650 3-1/2" - 4" openings

## SINK STRAINER BASKET



306195

# TOILETS—FLUIDMASTER

## TOILETS—READY-TO-GO



101030 White Round Seat  
109100 White Round Toilet



101035 ADA White Seat  
109105 ADA White Toilet



### FLUSH VALVE



102035

### TANK FILL VALVE



102045

### TANK REPAIR KIT



102050

### WAX BOWL RING



103050 w/sleeve

### TOILET TRIP LEVER



106050 Chrome

### FLAPPER



106065

### FLAPPER



106070 Sure fit

### TANK TO BOWL BOLT

106045  
1/4" x 2-1/4"



### BOWL TO FLOOR BOLT

106040  
5/16" x 3"



# PLUMBING—DWV

## PVC SCHEDULE 40 PIPE



208000 3/4" x 20'  
 208025 3" x 10"  
 208015 1-1/2" x 10' ABS  
 208020 2" x 10' ABS

## LONG-TURN TEE



103610 3" x 3" x 1-1/2"  
 10/box  
 101040 3"; 10/box

## HUB SANITARY TEE



101045 3"; 20/box

## HUB REDUCING SANITARY TEE



103615 3" x 3" x 1-1/2"; 20/box  
 103605 3" x 3" x 2"; 20/box

## CLOSET FLANGE



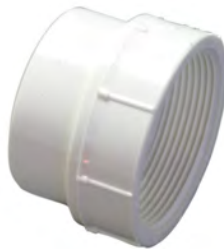
106075 4" x 3"

## DOUBLE 90° BEND



103600 3"; 10/ctn

## CLEANOUT ADAPTER



103060 3"; 25/box

## CLEANOUT PLUG



103065 3"; 25/box

## 45° ELBOW



102060 3"; 25/box

## FLUSH BUSHING



105500 3" x 1-1/2"  
 105505 3" x 2"

## 22-1/2° ELBOW



102065 3"; 25/box

# PLUMBING—PVC

**LONG SWEEP 90°**



102055 3"; 20/box

**COUPLING**



103055 3"; 50/box

**P-TRAP w/UNION**



104065 1-1/2"

**TRAP ADAPTER**



105510 1-1/2"

**BALL VALVE**



202045 3/4" S x S

**CONTINUOUS WASTE**



304060 1-1/2"  
306205 1-1/2" Dishwasher

**MALE ADAPTER**



202015 3/4" S x MPT; 50/box

**COUPLING**



202020 3/4" S x S; 50/box

**TEE**



202025 3/4" S x S x S; 25/box

**FEMALE ADAPTER**



202030 3/4" S x FPT; 50/box

**45° ELBOW**



202035 3/4" S x S; 50/box

**90° ELBOW**



202040 3/4" S x S; 50/box



# PLUMBING—JG SPEEDFIT

## COUPLER



201020 1/2"  
201025 3/4"

## MALE CONNECTOR



203000 1/2" x 1/2"  
203005 3/4" x 1/2"  
203010 3/4" x 3/4"

## SWIVEL CONNECTOR



201030 1/2" fpt

## SWIVEL ELBOW



201035 1/2" fpt

## UNION ELBOW



201040 1/2"  
201045 3/4"

## UNION TEE



202050 1/2"  
202060 3/4"

## REDUCING TEE



202055 1/2" x 1/2" x 3/4"  
202065 3/4" x 3/4" x 1/2"  
202070 3/4" x 1/2" x 1/2"  
202075 3/4" x 1/2" x 3/4"

## BALLCOCK CONNECTOR



203015 1/2" cts x 7/8"-15/16"

## END CAP



203020 1/2"  
203025 3/4"

## STRAIGHT SHUT OFF



206110 1/2"  
206115 3/4"

## PIPE INSERT



203030 1/2"  
203035 3/4"

## PIPE REDUCER



203040 5/8" x 3/8"  
203045 5/8" x 1/2"

# WATER HEATERS

## WATER HEATERS



ITEM #	U.S. GAL.	VOLTS	WEIGHT	HEIGHT IN	DIA.
209100	30	240	70	45-1/2	17-3/4
209110	30	120	83	30	21-3/4
209105	40	240	94	46-1/4	19-3/4

### ELECTRIC THERMOSTAT



Replacement for any electric, domestic water heater.

206700 Upper  
206705 2 pole

### SCREW-IN IMMERSION



206030 1500 watt 120v  
206090 3500 watt 240v  
206715 4500 watt 240v

### WATER HEATER PAN



207005 20"

### POP—OFF VALVE



202005 3/4"

### ELEMENT WRENCH



206035

### W/H CONNECTOR



203050 3/4" JG Fitting

### WATER HEATER CONNECTOR



206100 3/4" - 18" long brass

### PIPE INSULATION



207000 1" x 6'

# PLUMBING—MISC

## FROST PROOF SILLCOCK



206095 10" - 3/4"

## CHECK VALVE



Brass 3/4" FPT x 3/4" MPT

205000

## WATER REGULATOR



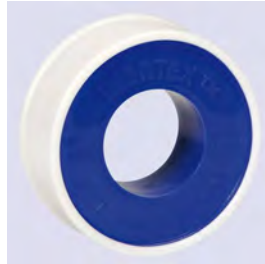
201015 Cash-Acme

## STOP VALVE



206730 3/4"

## TEFLON TAPE



205005

## PIPE HANGER STRAP



501070 100/ft

502050 10/ft; 50/box

## HEAT CABLE PLUG KIT



201000

## HEAT CABLE REEL



Constant heat; cut to length

201010 1" x 6'

## TUFF-PEX TUBING

208050 3/8"

208055 3/4"

208060 1/2"



## ANTIFREEZE



201500 1 Gallon

## VENT CAP



132005 Plastic 2-1/2"

402060 Steel 2-3/8"

## BOSS CLEANER



261005 1 Gal.



261015 1 Gal.

# CEMENT

## TRANSITION GLUE



205012 4 oz  
205010 16 oz

## PURPLE PRIMER

All purpose primer/  
cleaner for PVC/CPVC  
pipe and fittings. Re-  
moves surface dirt and  
softens pipe surface.



205015 4 oz

## ALL PURPOSE CEMENT



205025 4 oz  
205035 16 oz

## ABS CEMENT



205050 4 oz

## RAIN-R-SHINE



Fast setting blue PVC  
cement for solvent  
welding under damp  
conditions.

205040 4 oz  
205045 16 oz

## PLUMBERS PUTTY



304030

## PIPE JOINT COMPOUND



206105 1 oz  
204000 4 oz

## RECTORSEAL



204005 8 oz